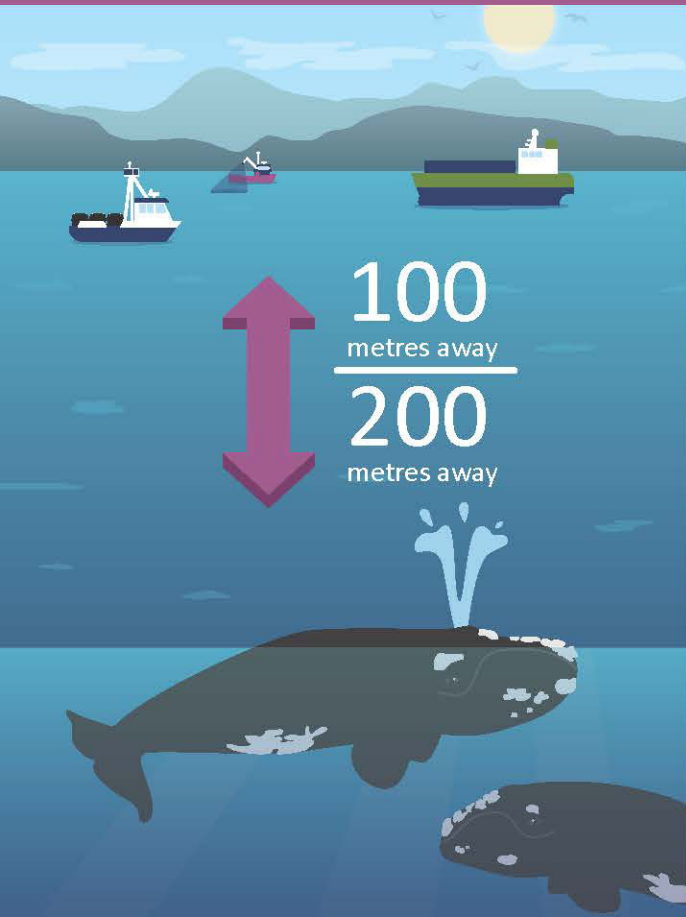
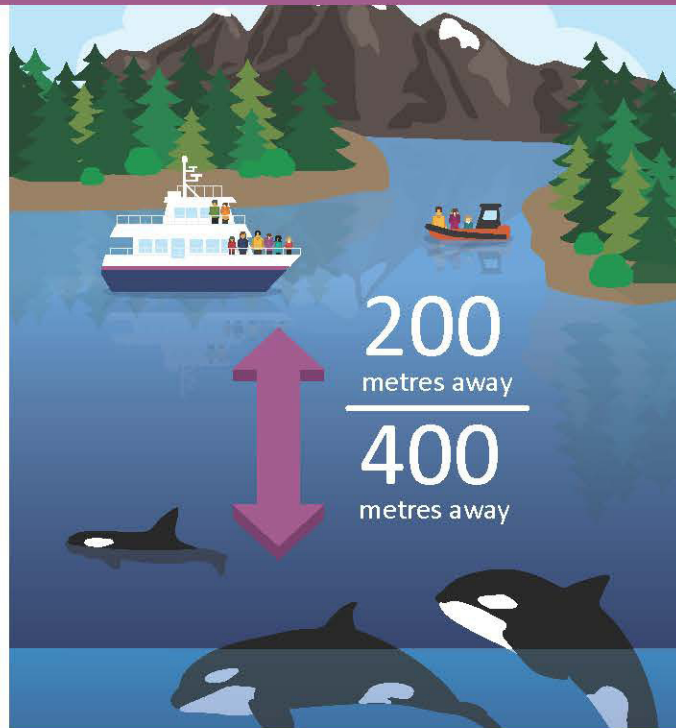


If you see tail, fin or spray – Stay far enough away

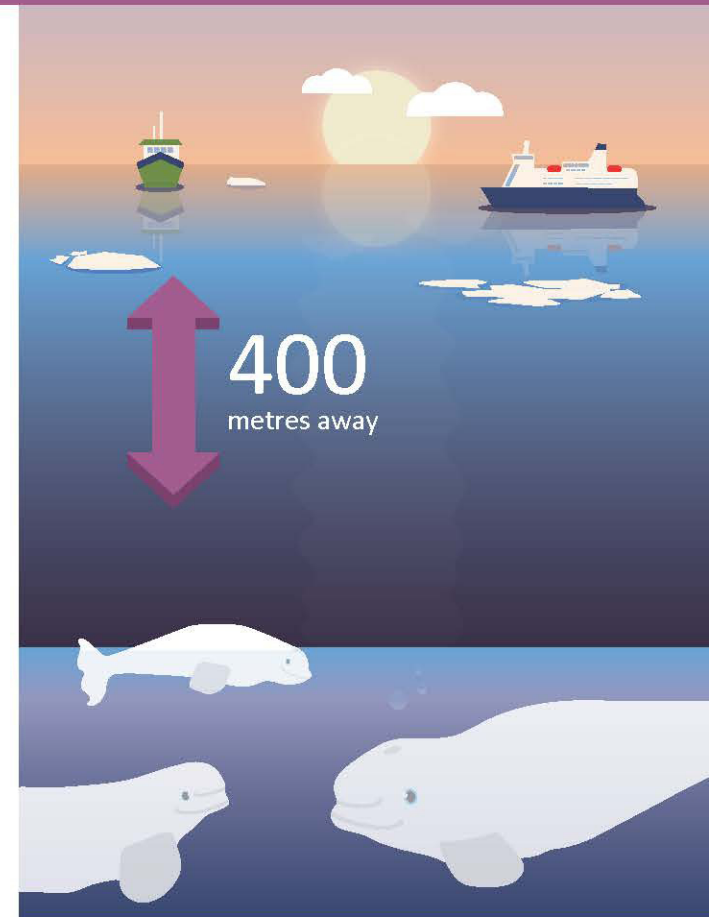


Keeping a minimum of **100 metres** away from most whales, porpoises and dolphins, and keeping **200 metres** away if they are in resting position or with their calf.



Keeping 200 metres away from killer whales in BC and the Pacific Ocean and keeping 400 metres away from all killer whales in southern BC coastal waters between Campbell River and just north of Ucluelet* (June 1 – May 31)

*Under the Canada Shipping Act. Some exceptions may apply.



Belugas in the St. Lawrence Estuary

Certain whales, like killer whales in B.C. and the St. Lawrence Estuary Beluga in Quebec, need **more distance** because of threats they already face. There are also other approach distances which are tailored to particular circumstances. For more information visit:

<https://dfo-mpo.gc.ca/campaign-campagne/protectingwhales-protegerbaleines/index-eng.html>



Fisheries and Oceans
Canada

Pêches et Océans
Canada

Canada